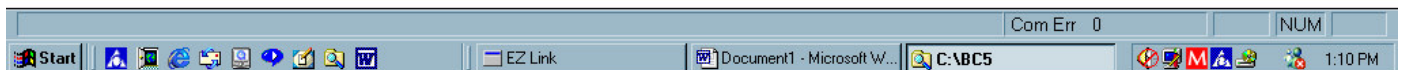
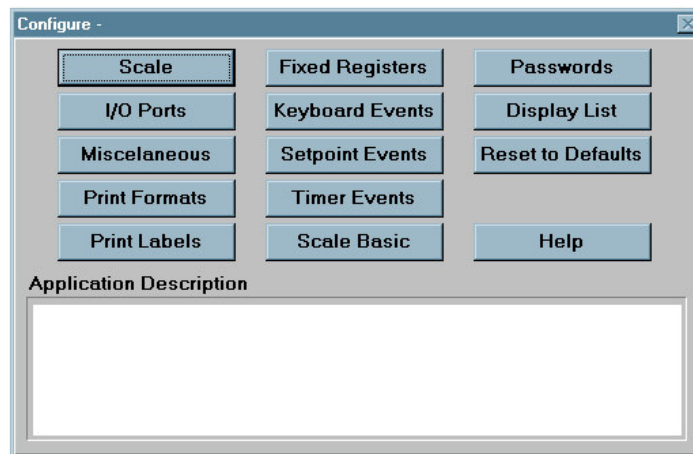


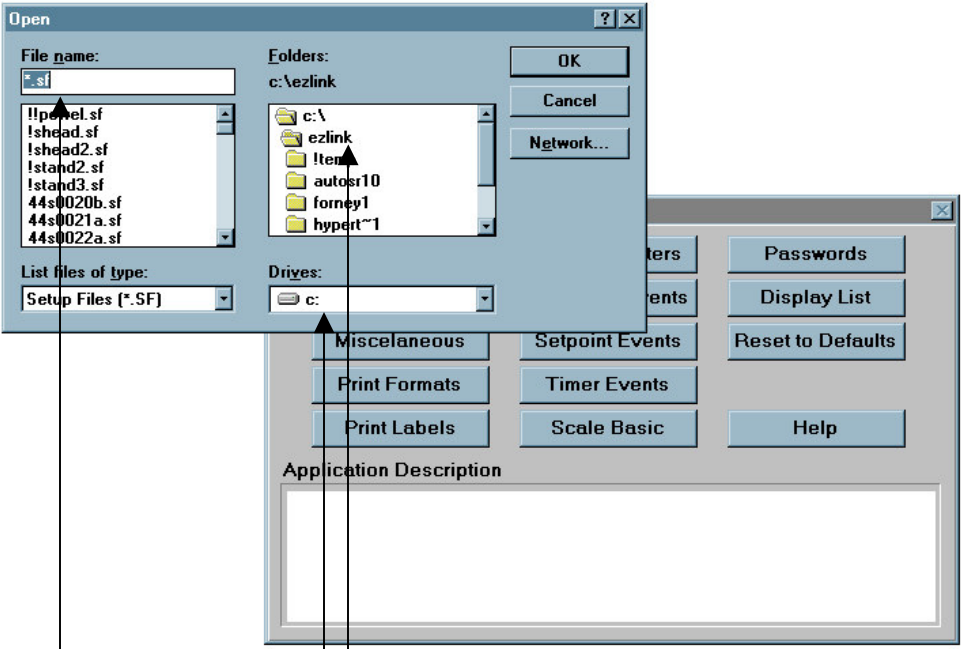
Ez-link installation and uploading of .sf program files into an indicator from the PC

1. Install Ez-link on a PC or laptop computer. A folder will be created on the drive named Ezlink that contains the entire application file to run Ezlink. You can create a shortcut on your desktop with the target file being Ezlink.exe located in this folder.
2. Copy any program files from installation zip file with the extension .sf to this directory. Some example programs are included with the software.
3. Uploading a program into the indicator: Open ezlink.exe and the application will start.



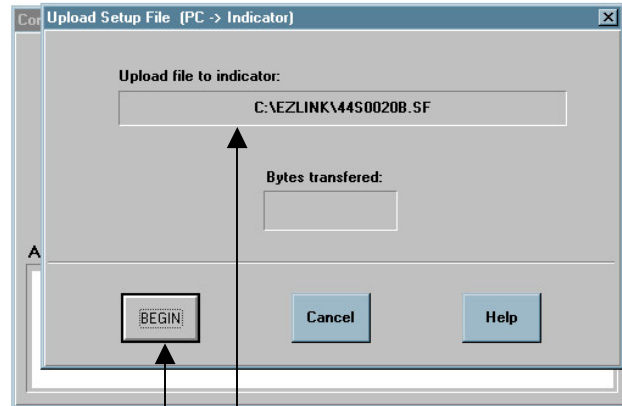
**Upload file to
indicator. Click
On this button**





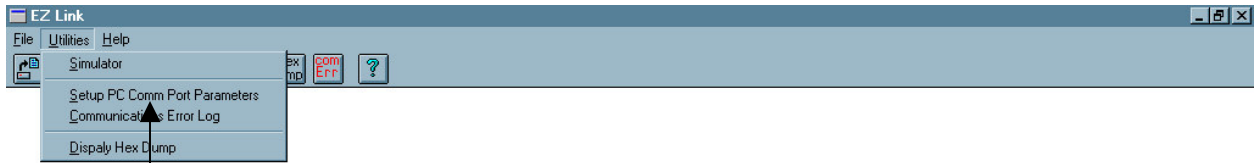
Select the drive, Ezlink folder and program file you would like to upload into the indicator. The click on OK.



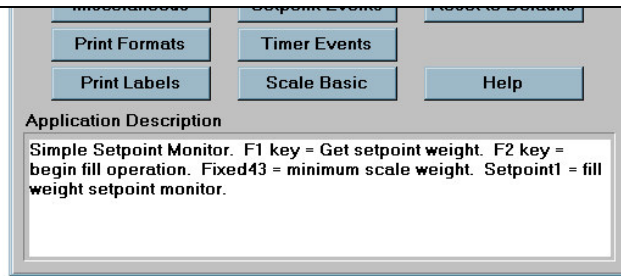


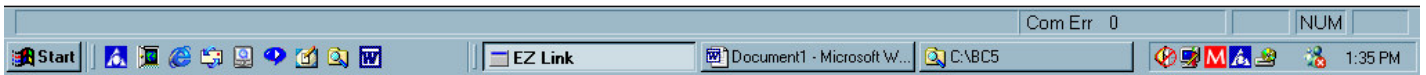
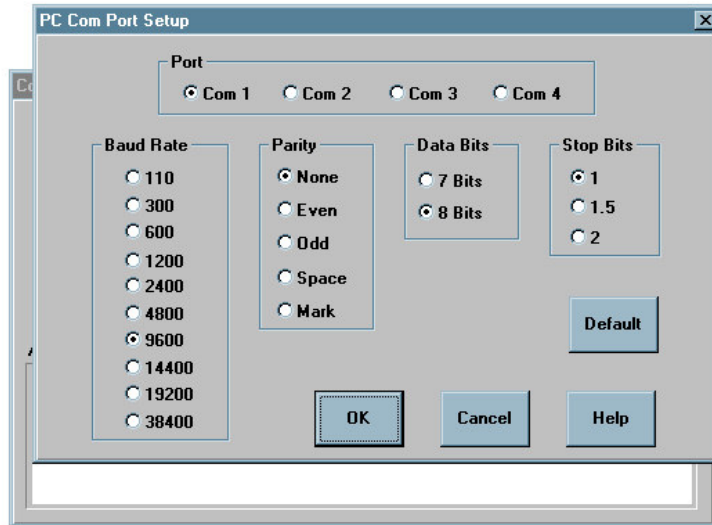
The upload window will appear containing the path for the program file that was selected. With the indicator turned on and in idle mode (not CFG mode) and the proper wiring connected See (port2.doc) click on the BEGIN button. The Bytes transferred window will start counting and READ will display on the indicator. The program has been successfully loaded.

An error message may appear if the indicator is not in idle mode, the wrong com port is selected, the baud rates and data formats on the PC and port2 on the indicator do not match or improper wiring.



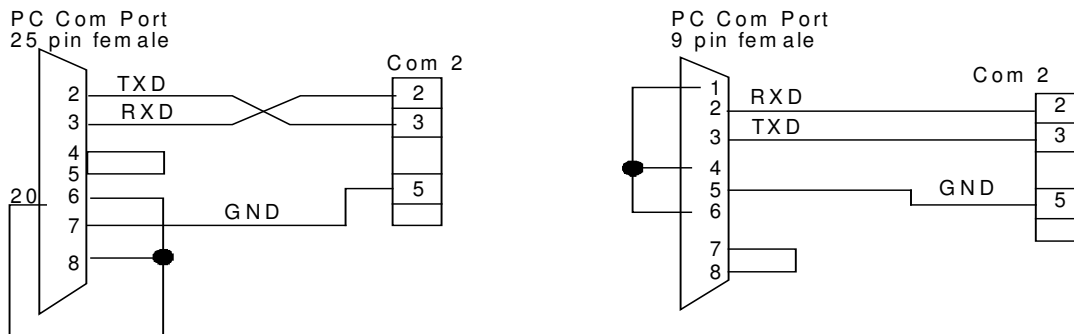
If an error occurs open the Utilities drop down menu and select Setup PC Comm. Port Parameters.



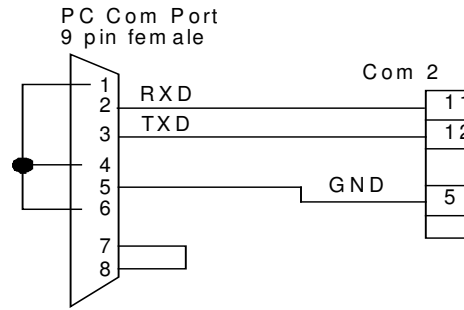
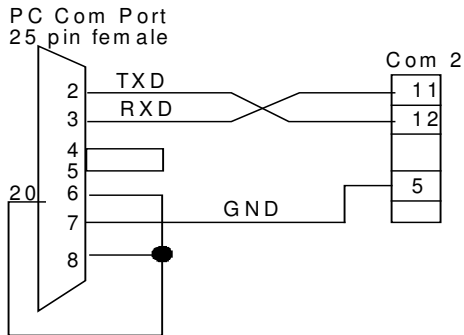


Connect a cable between the indicator and the PC. Use the following diagram for signal connections. **NOTE:** There are 2 types of PC communications port connectors; 25pin female (left hand diagram) and 9pin female (right hand diagram).

IDS 440 Cable diagram PC to



IDS 422/433/430 Cable diagram PC



Select the correct com port 1, 2, 3 or 4. Select 9600 baud rate, Parity none, Data bits 8, Stop bits 1. Click OK and save to disk. These settings will be loaded when Ezlink is launched and will not affect any other settings. Settings are restored when Ezlink is closed. Retry uploading the program.

NOTE: No other program can be running on the computer that uses the same serial port com port while trying to upload or download files to or from the indicator. Like Hyperterminal, Procomm, wedge or any other serial communications software or an error will occur.

Contact the factory for technical support if needed. (714) 921-1353