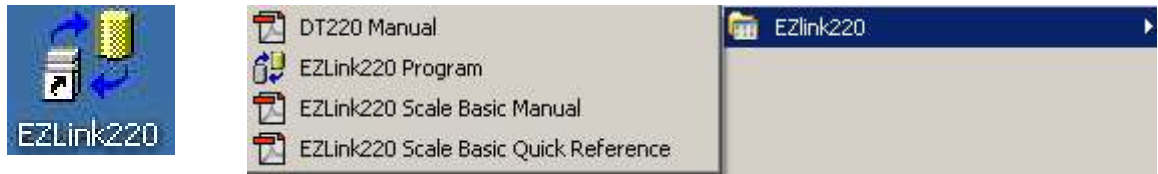


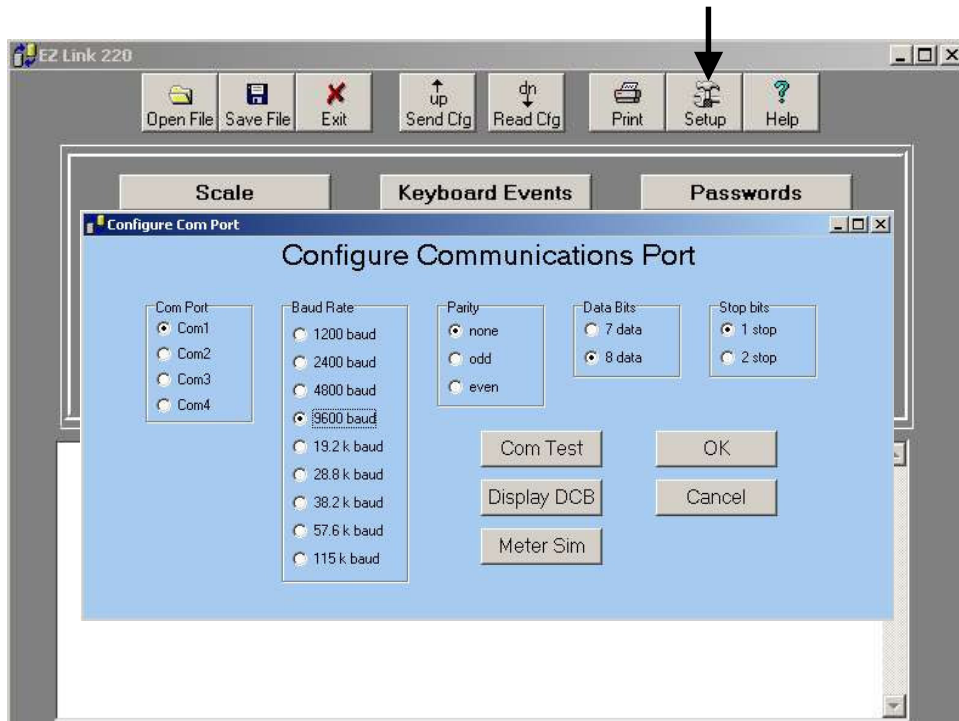
EZLink220 installation, setup and uploading of .sf program files into a DT-220 from the PC

1. Install EZLink220 on a PC or laptop computer. A folder will be created in C:\ProgramFiles\EZLink220 that contains the entire application file to run Ezlink along with manuals and examples. A shortcut will be created on your desktop with the target file being EZ220.exe located in this folder.
2. Click on the Shortcut or go to Program Files and select EZLink220 Program to run the EZLink220 application.

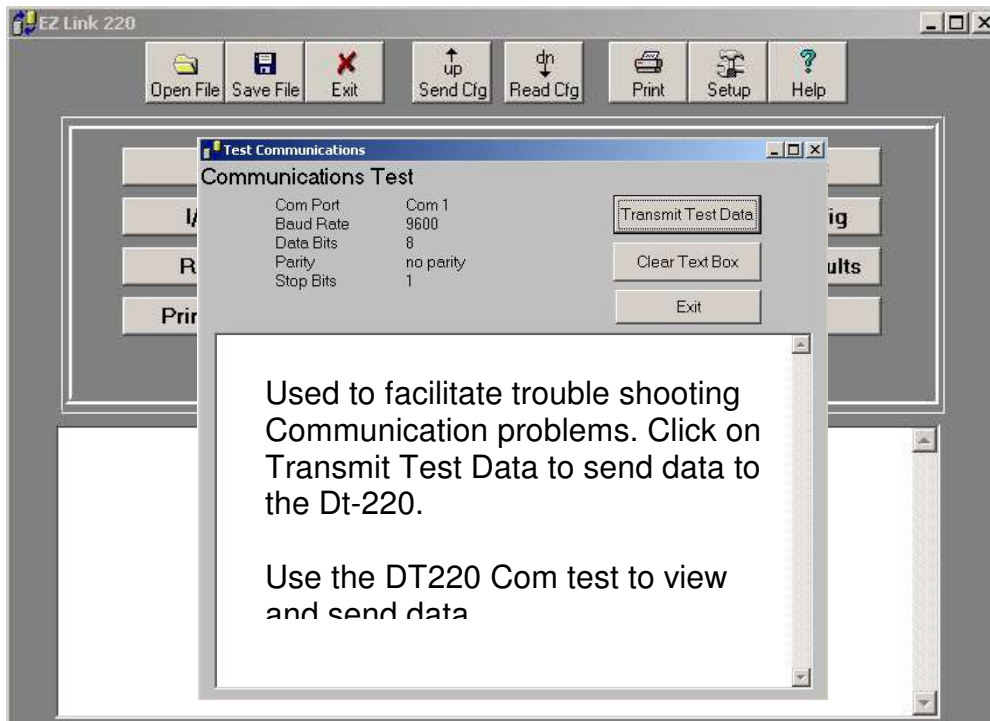


3.

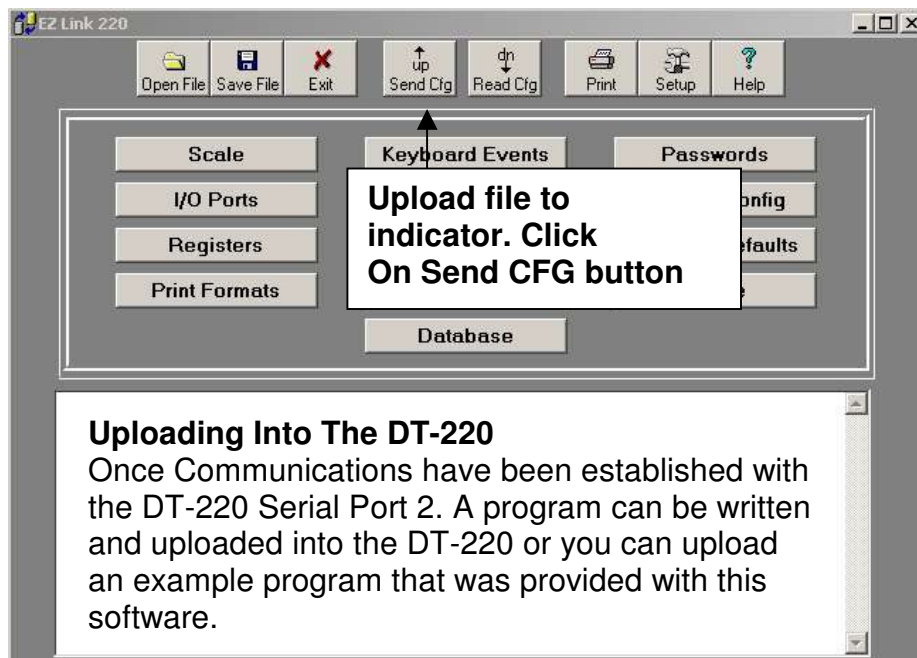
Select the **Setup** button to configure the Com ports, Com Test or to display the Port settings (Display DCB).



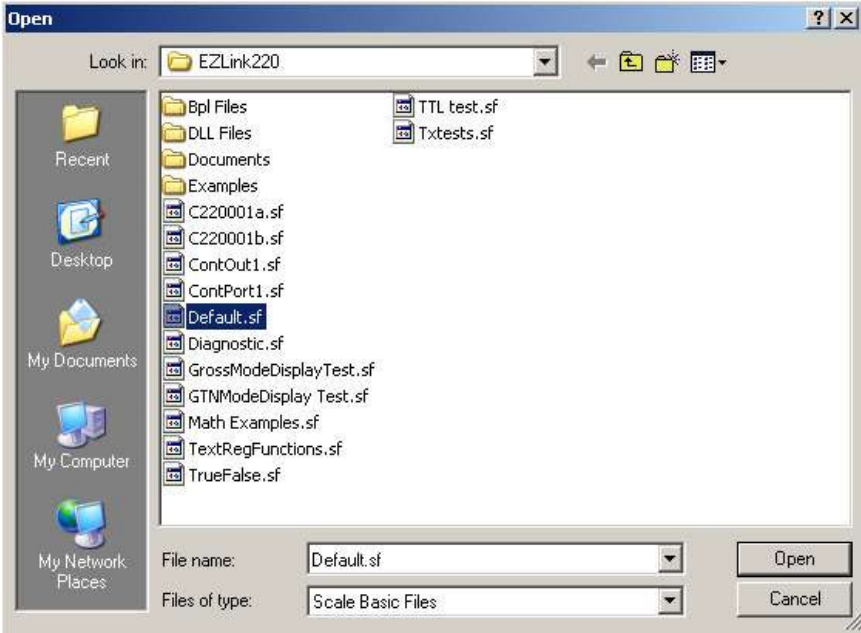
Com Test Feature: Send and Receive Serial Data



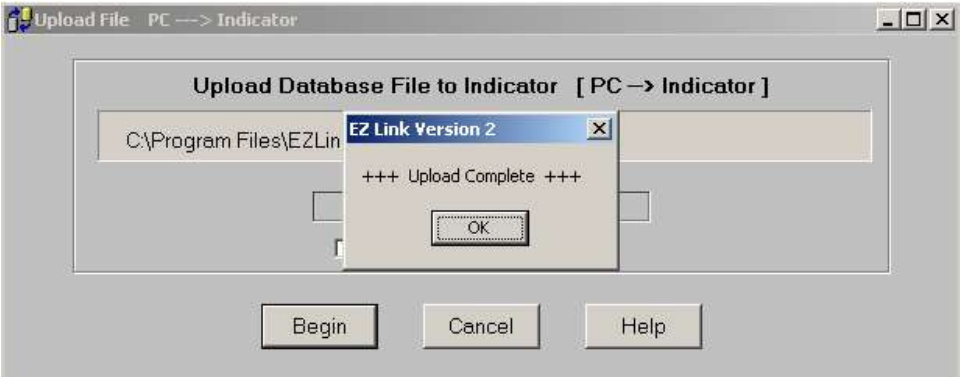
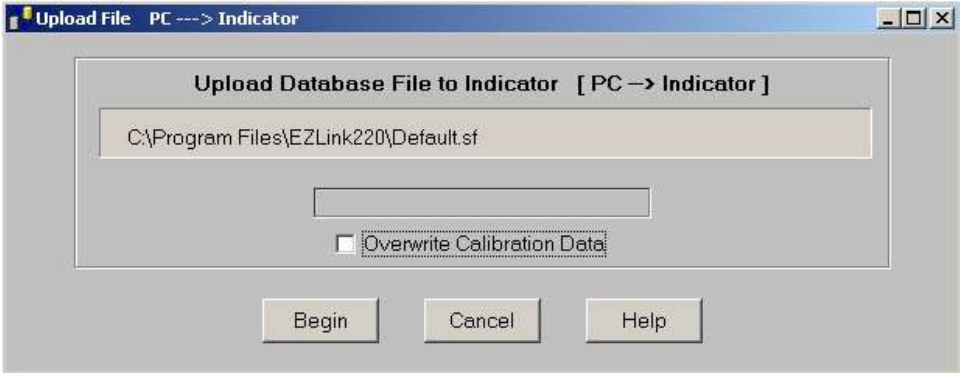
Uploading a program into the indicator: Open EZ220.exe and the application will start.



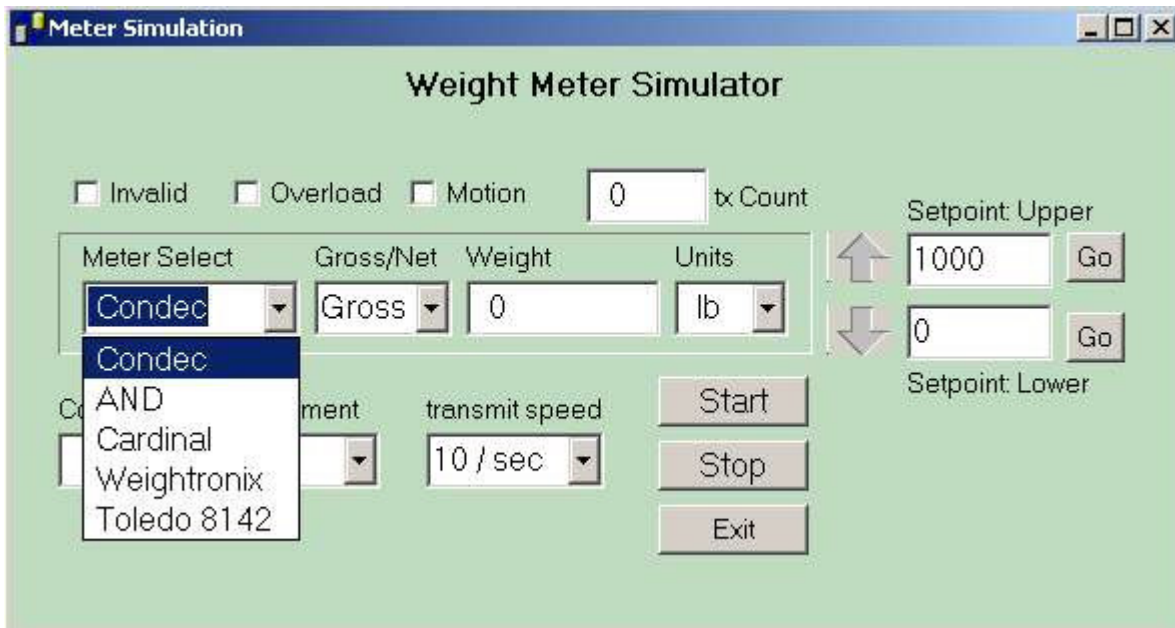
The Open window will appear. Select the file to upload and Click the Open button



The upload function window will display the file path and a checkbox for overwriting the Calibration. To keep the calibration in the unit DO NOT check the box. Click on the Begin button to start uploading data into the DT-220. The DT-220 will display the bit count while uploading. The Upload complete window will appear when completed.

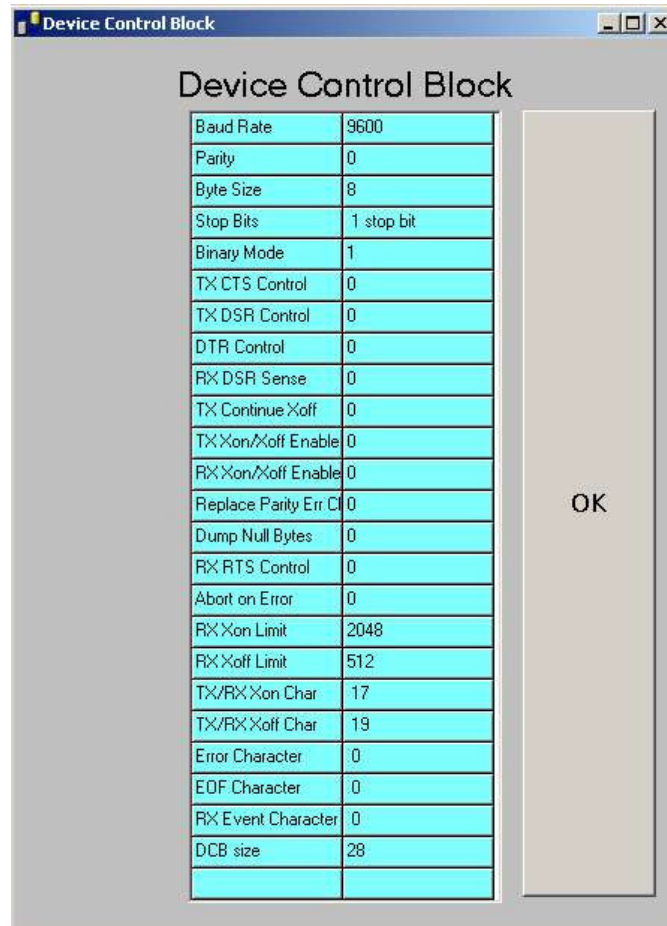


Meter Simulator Feature: The Weight Meter Simulator is used when no internal Analog card is installed and the unit is to be used as a data terminal connected to a weight meter. This feature allows you to select a meter type and simulate status and weight conditions. The Setpoint function allows incrementing and decrementing weight up or down to a pre-set value.



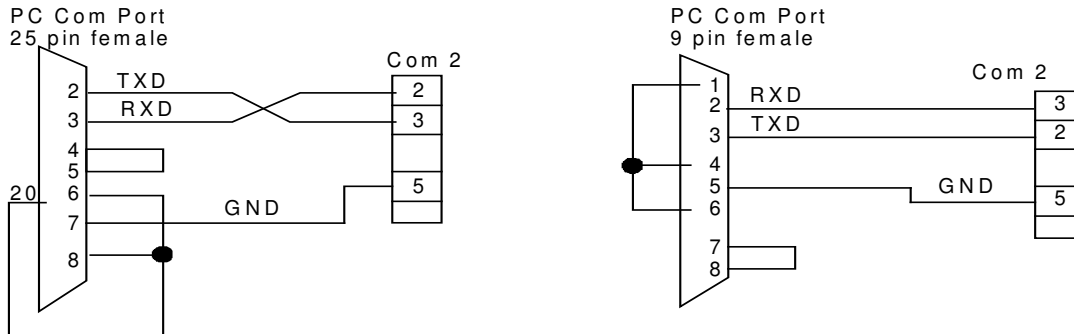
Test your programs with the simulator if no analog card is installed no need for a meter. NOTE: Use port 1 for the scale input port & port 2 for EZLink220 uploads

The Display Device Control Block Feature: This function allows you to check the selected computer Com port settings. This is helpful to verify your settings match.



Connect a cable between the indicator and the PC. Use the following diagram for signal connections. **NOTE:** There are 2 types of PC communications port connectors; 25pin female (left hand diagram) and 9pin female (right hand diagram).

IDS 220 Cable diagram PC to



Com 3 Com 1 Parallel Port

Com 2

Select the correct com port 1, 2, 3 or 4. Select 9600 baud rate, Parity none, Data bits 8, Stop bits 1. Click OK and save to disk. These settings will be loaded when EZLink220 is launched and will not affect any other settings. Settings are restored when EZLink220 is closed. Retry uploading the program.

NOTE: No other program can be running on the computer that uses the same serial port com port while trying to upload or download files to or from the indicator. Like Hyperterminal, Procomm, wedge or any other serial communications software or and error will occur.

Contact the factory for technical support if needed. (714) 921-1353